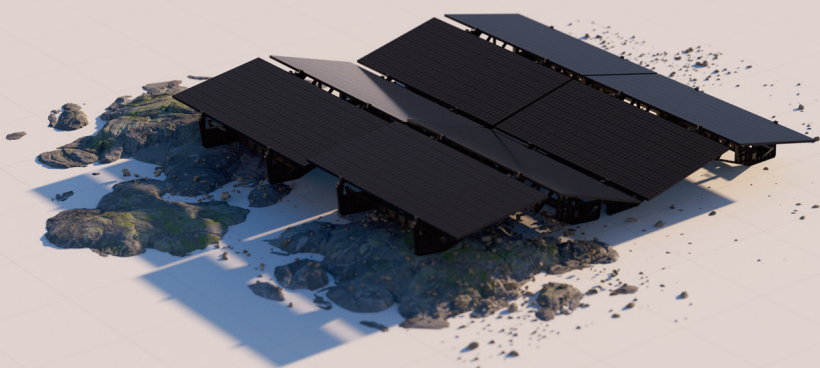
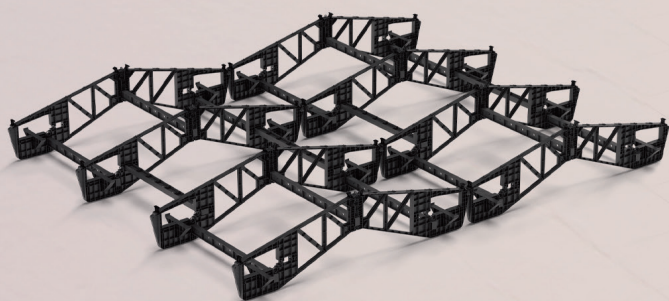




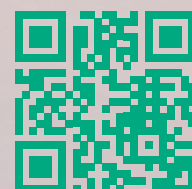
amfisol

Ground mounting system for solar panels



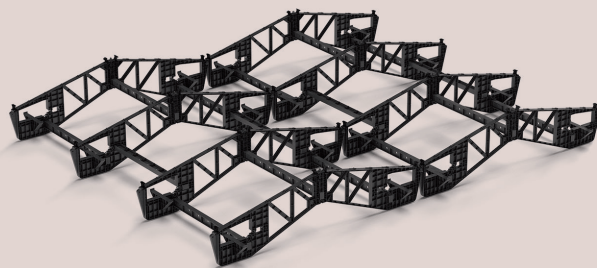
- Masters challenging terrains
- Designed for uneven landscape up to 15° between shelters
- No ground anchoring, only limited ballast
- Fast and tool-free assembly
- Effortless integrated cable management
- Easy to move and to reuse
- Easier building permit
- High energy density
- Designed according to European standards
- 100% recyclable
- Made in Belgium

**Solar Power,
Anywhere, Anytime**





amfisol



Masters challenging terrains



No anchoring, only limited ballast



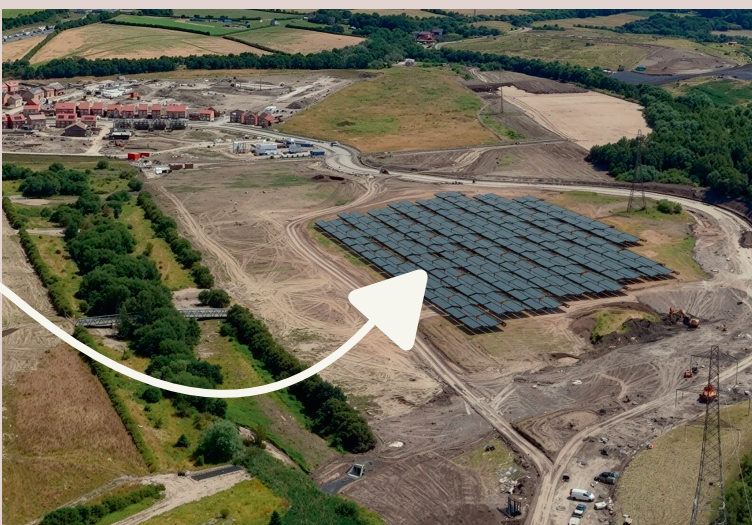
High energy density



Modular & flexible concept



Easy to move and to reuse



supported by



CONTACT AMFISOL BV
Achterstenhoek 5 - 2275 Lille - Belgium - www.amfisol.eu - info@amfisol.eu